

APPENDIX 9 TORRA CONSERVANCY

Table of contents

1. DEMOGRAPHICS	144
1.1 Gender	144
1.2 Location	144
1.3 Age	144
1.4 Education	144
1.5 Employment	145
1.6 Household income and other contributions to the household	145
1.7 The household head	146
2. LIVELIHOODS	147
2.1 Livestock	150
2.2 Crop production/gardening	151
3. NATURAL RESOURCE USE	152
3.1 NR contribution to livelihoods and cash income	152
3.2 NR utilisation by households	152
4. THE CONSERVANCY	153

List of graphs and tables

Graph 1 Age distribution	144
Graph 2 Main occupation (15–65, not at school)	145
Graph 3 Weighted average household income	146
Graph 4 Most important livelihood activities to households	147
Graph 5 Second most important livelihood activities to households	147
Graph 6 Third most important livelihood activities to households	148
Graph 7 Most important sources of cash income to households	148
Graph 8 Second most important sources of cash income to households	149
Graph 9 Third most important sources of cash income to households	149
Table 1 Annual income of (income-earning) household members	145
Table 2 Stock ownership, trading and income	150
Table 3 Crop production and income	151
Table 4 Number of households ranking resource utilisation as important (any rank)	152
Table 5 Number of registered members per household (n=71)	153
Table 6 Impact of conservancy on availability of natural resources for household use (%)	154

1. DEMOGRAPHICS

1.1 Gender

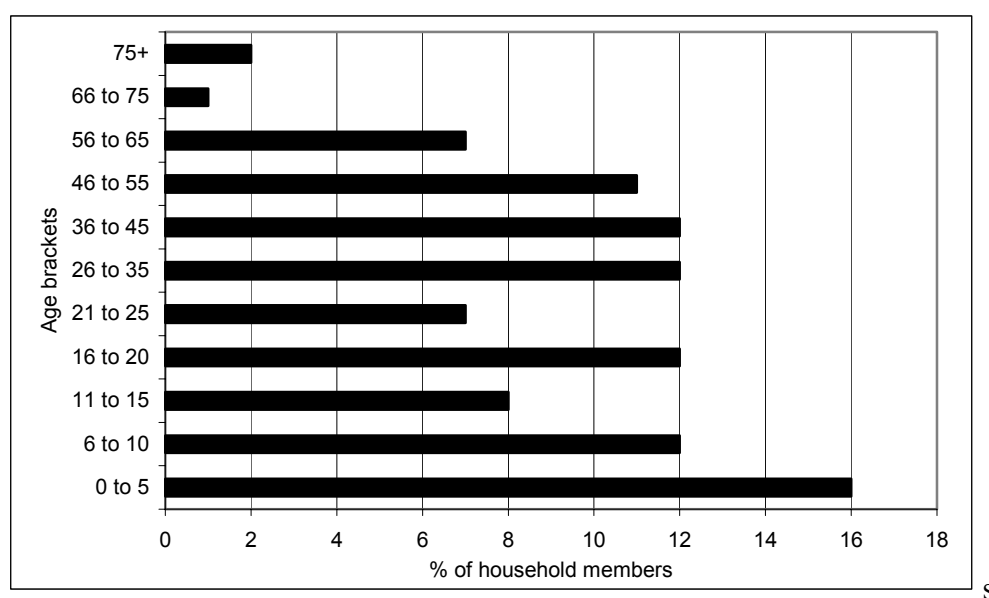
- 84 households responded (representing 379 household members).
- 56% are male-headed households; 41% female de jure; and 4% female de facto.
- 52% of respondents are male and 48% female.

1.2 Location

The average number of household members living in the household is 4 (median=4; range 1 to 13); on average, no members live away (range 0-4).

1.3 Age

Graph 1 Age distribution

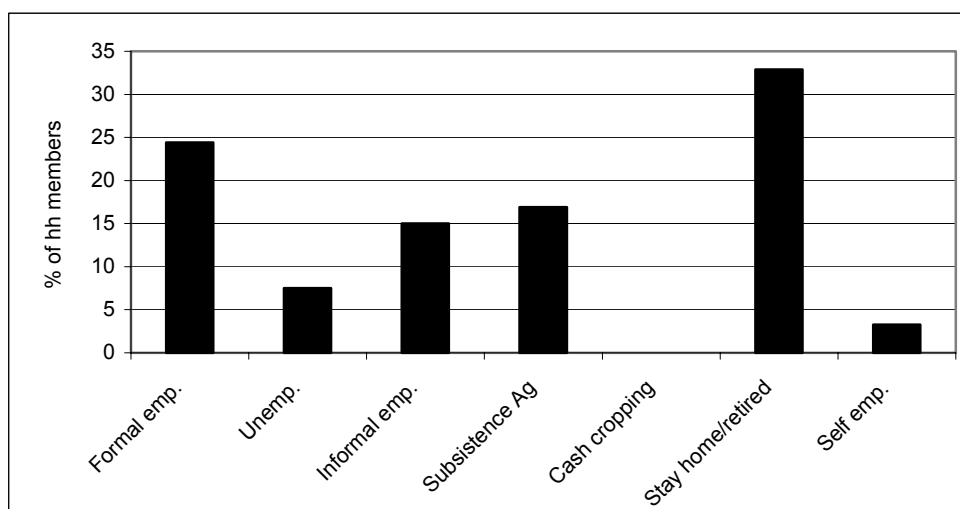


1.4 Education

- Of the respondents over 20 years old, 17% have had no formal schooling. The highest educational attainment for 35% is primary school. 24% have completed Grades 7-9 and 19% Grades 10-12. Only 3% have completed any higher education. 3% do not know their highest level of education.
- 20% of household members are still attending school.
- 7% of households have children not attending school because of an inability to afford school fees or other school-related costs. Of these households, 50% have only one child out of school and 50% have two.

1.5 Employment

Graph 2 Main occupation (15–65, not at school)



1.5.1 CBNRM and tourism-related occupations

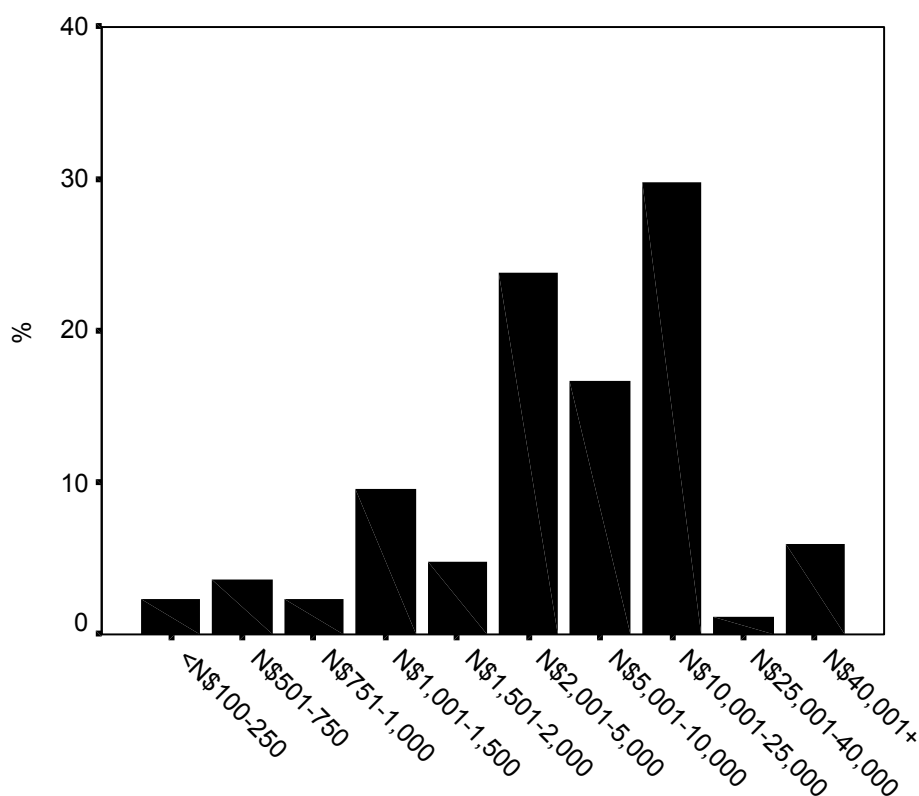
- Of the 379 household members, five are conservancy committee members; eight are CGGs/CRMs/shepherds; 12 are employed at a private tourism enterprise; two work at a community campsite; two have their own enterprise providing goods/services to lodge/tourists (e.g. laundry, food); and one has an enterprise selling to tourists (e.g. crafts). In total, these respondents represent 8% of household members.
- Of the five people (less than 2%) with secondary occupations of these types, three are conservancy committee members and two are employed at a private tourism enterprise.

1.6 Household income and other contributions to the household

38% of household members over 16 years old stated that they earned no income. Table 1 shows income distribution of the 151 individuals who do earn an income.

Table 1 Annual income of (income-earning) household members

Income bracket	% of respondents
<N\$100-250	4
N\$251-500	2
N\$501-750	4
N\$751-1,000	5
N\$1,001-1,500	9
N\$1,501-2,000	15
N\$2,001-5,000	31
N\$5,001-10,000	11
N\$10,001-25,000	10
N\$25,001-40,000	2
N\$40,001+	3
Don't know	4

Graph 3 Weighted average household income¹

- 99% of households have at least one member contributing to cash income, but only 5% of households receive cash from three or more members.
- 83% receive contributions in kind. Of these households, 53% receive them from one member only and a further 36% from two members.
- 30% of households receive remittances (from someone living away). Of these, 71% receive them from only one source; 13% from two sources; 8% from three sources; and 8% from four sources. None receive remittances from more than four sources.
- Approximately 24% of households have member(s) receiving a pension. Of these, 70% have only one member receiving a pension, with the remaining 30% of households having two pensioners.

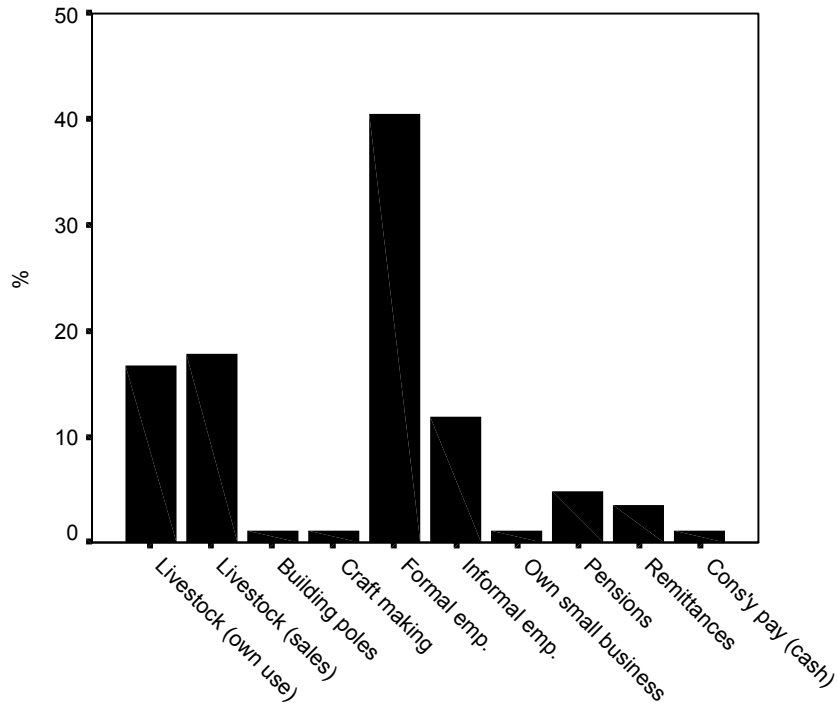
1.7 The household head

- 94% of household heads live in the household, with only 6% living away. 39% undertake subsistence agriculture; 35% are in formal employment; 14% have informal employment; and 7% stay at home/are retired.
- 18% of household heads have had no education. 36% have completed primary school; 25% have completed Grades 7-9; and 16% Grades 10-12. Only 4% have completed higher education. 2% do not know.

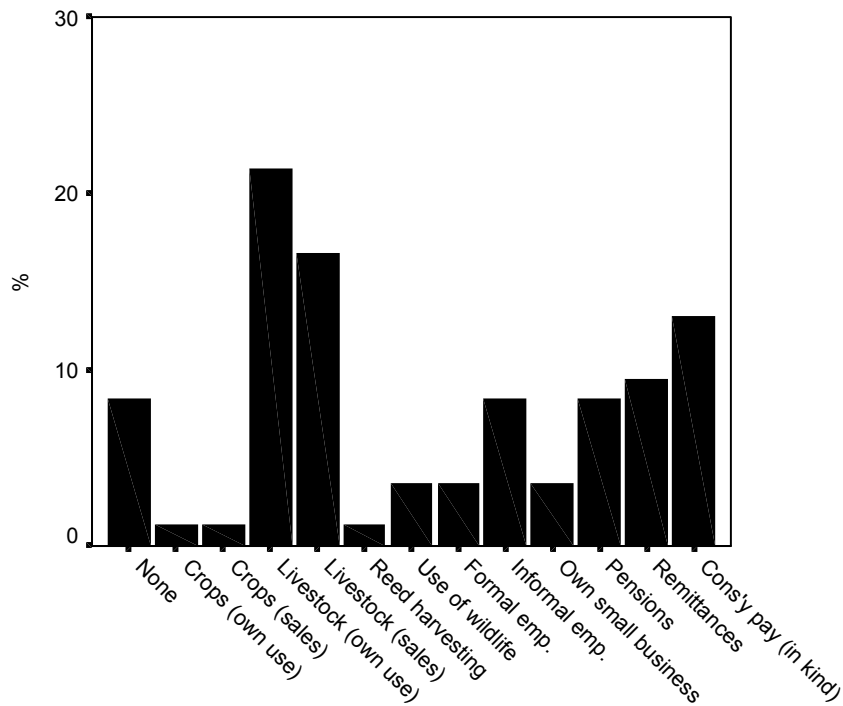
¹ Weighted average household income is the average income of households, excluding household members who do not earn income.

2. LIVELIHOODS

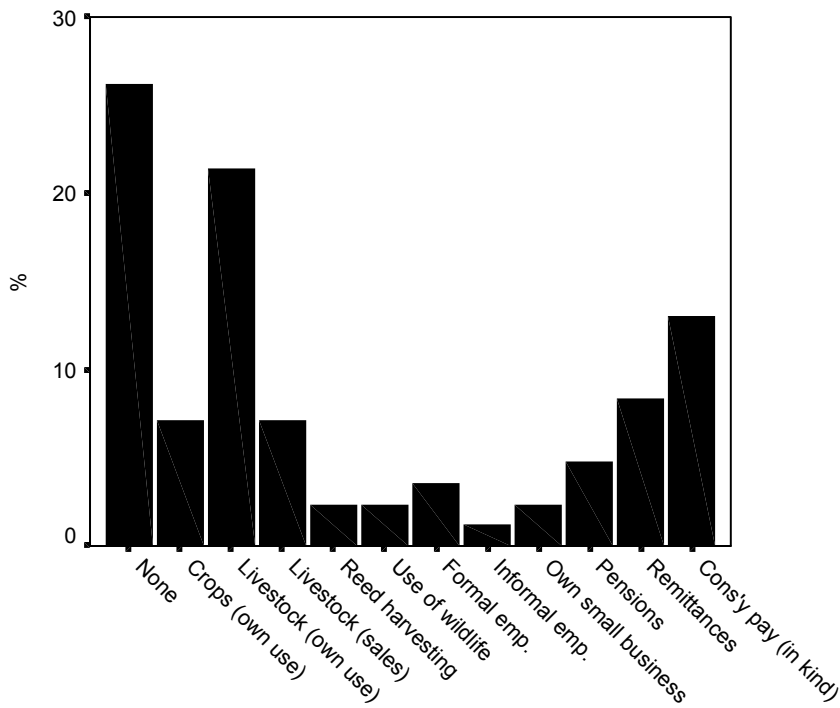
Graph 4 Most important livelihood activities to households



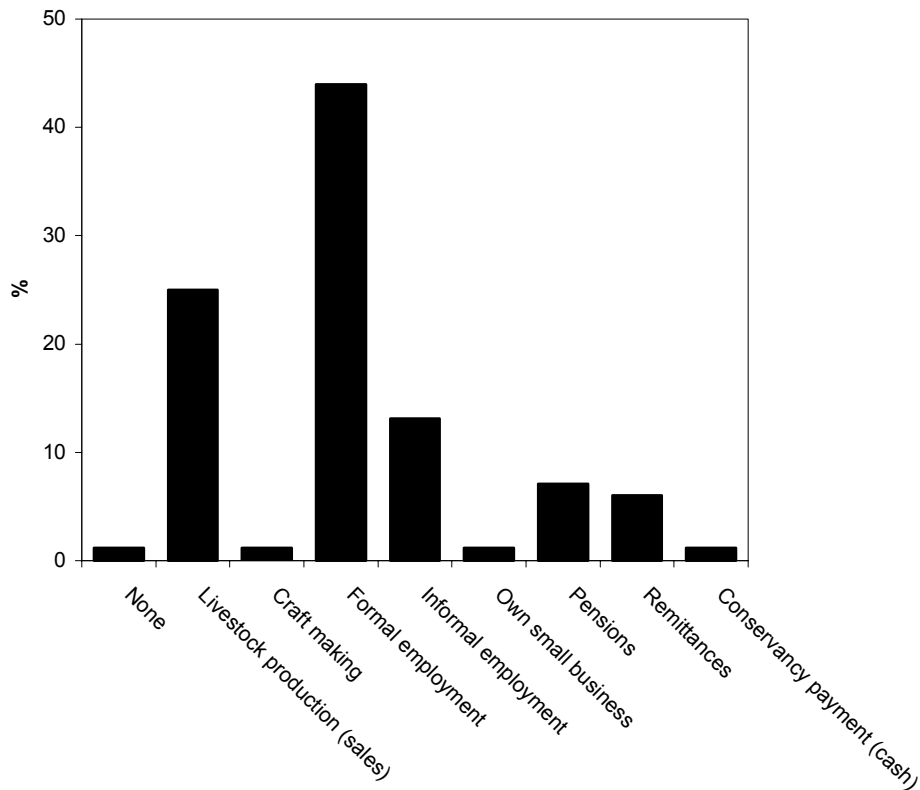
Graph 5 Second most important livelihood activities to households



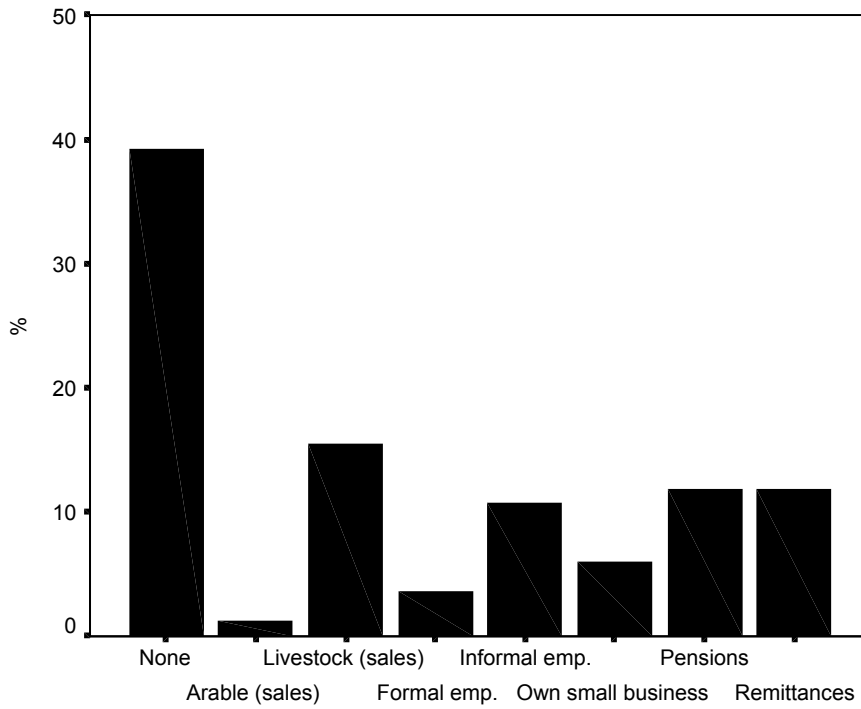
Graph 6 Third most important livelihood activities to households



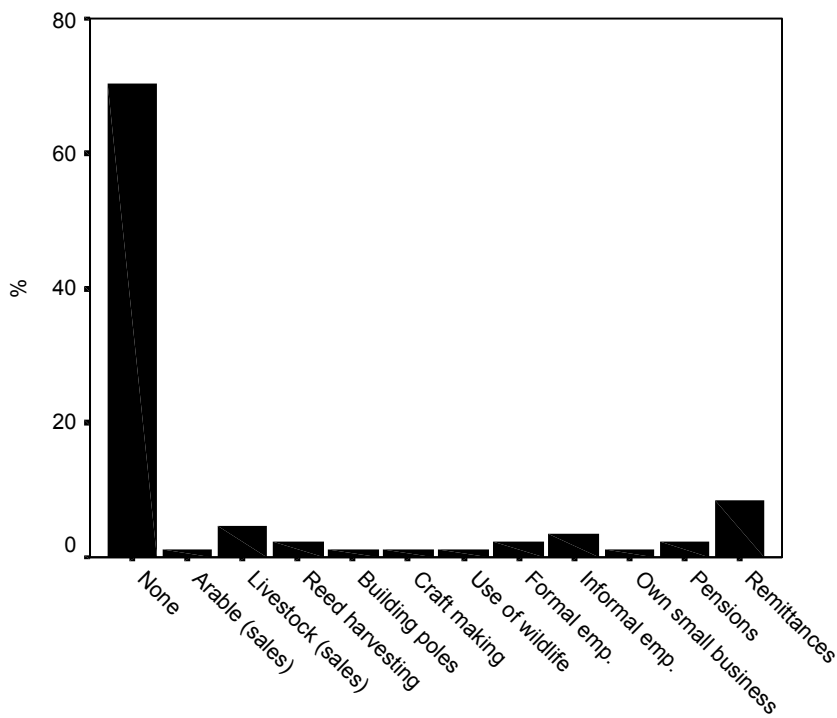
Graph 7 Most important sources of cash income to households



Graph 8 Second most important sources of cash income to households



Graph 9 Third most important sources of cash income to households



2.1 Livestock

74% of households own or have regular access to livestock.

Table 2 Stock ownership, trading and income¹

	Cattle	Sheep	Goats	Poultry	Donkeys	Horses	Pigs
Ownership							
No. of hhs	31	18	60	51	41	8	2
Mean (median)	24 (8)	62 (15)	56 (41)	9 (7)	6 (5)	6 (4)	4 (4)
Range	2-381	1-293	2-280	1-35	1-30	2-12	2-5
Purchases							
No. of hhs	-	-	1	1	1	-	-
Mean (median)	-	-	6 (6)	13 (13)	2 (2)	-	-
Range	-	-	6	13	2	-	-
Milk consumption							
No. of hhs	21	-	43	-	-	-	-
Mean (median)	4 (3)	-	12 (10)	-	-	-	-
Range	1-11	-	1-51	-	-	-	-
Meat consumption							
No. of hhs	2	3	18	5	2	-	1
Mean (median)	1 (1)	4 (1)	5 (2)	1 (1)	1 (1)	-	1 (1)
Range	1	1-10	1-20	1	1	-	1
Milk sales (N\$)							
No. of hhs	-	-	1	-	-	-	-
Mean (median)	-	-	40 (40)	-	-	-	-
Range	-	-	40	-	-	-	-
Meat sales (N\$)							
No. of hhs	1	2	2	1	2	-	-
Mean (median)	1,800 (1,800)	725 (725)	1,100 (1,100)	20 (20)	1,860 (1,860)	-	-
Range	1,800	400-1,500	200-2,000	20	1,720-2,000	-	-
Transport sales (N\$)							
No. of hhs	1	-	-	-	-	-	-
Mean (median)	400 (400)	-	-	-	-	-	-
Range	400	-	-	-	-	-	-
Live sales (N\$)							
No. of hhs	5	2	10	-	-	-	-
Mean (median)	10,500 (2,300)	350 (350)	1,018 (450)	-	-	-	-
Range	1,500-43,200	300-400	150-4,200	-	-	-	-
Losses to predators							
No. of hhs	-	2	9	6	-	-	-
Mean (median)	-	6 (6)	6 (4)	3 (2)	-	-	-
Range	-	3-9	1-19	1-11	-	-	-
Bartered							
No. of hhs	-	-	1	1	1	-	-
Mean (median)	-	-	4 (4)	1 (1)	1 (1)	-	-
Range	-	-	4	1	1	-	-

¹ Over the three months prior to the survey

- Multiple stock ownership: only 12 households own cattle, goats and sheep. 18 households own sheep and goats; 31 own goats and cattle; and 12 own both sheep and cattle.
- Reasons for livestock sales were identified as: to meet subsistence needs (54%); educational needs (25%); medical needs (8%); ceremonial needs (6%); and because the household sells stock regularly (6%) (n=48).

2.2 Crop production/gardening

Only 26% of all households surveyed practiced crop production or gardening.

Table 3 Crop production and income¹

	Maize	Pumpkin/ squash	Beans	Melons	Tomato	Green Veg	Tree crops	Sugar reed
Dryland area planted (m²)								
No. of hhs	1	2	-	1	1	3	1	1
Mean (median)	35 (35)	21 (21)	-	35 (35)	35 (35)	12 (1)	2 (2)	9 (9)
Maximum	35	35	-	35	35	35	2	9
Irrigated area planted (m²)								
No. of hhs	5	7	1**	3	9	8	14	-
Mean (median)	2016 (28)	1441 (14)	14 (14)	3347 (28)	1125 (14)	1270 (22)	14301 (16)	-
Maximum	10000	10000	14	10000	10000	10000	Dk	-
Crop sold (N\$)								
No. of hhs	-	1	-	1	1	1	2	-
Mean (median)	-	600 (600)	-	200 (200)	50 (50)	20 (20)	55 (55)	-
Maximum	-	600	-	200	50	20	60	-
% damage (wild animals)								
No. of hhs	1	1	-	1	1	3	2	-
Mean (median)	90 (90)	90 (90)	-	90 (90)	90 (90)	43 (20)	60 (60)	-
Maximum	90	90	-	90	90	90	100	-
% destroyed (domestic animals)								
No. of hhs	2	2	2	1	2	-	2	-
Mean (median)	15 (15)	20 (20)	30 (30)	10 (10)**	30 (30)	-	35 (35)	-
Maximum	20	30	50	10	50	-	50	-
% destroyed (pests)								
No. of hhs	3	-	1	1	3	-	3	-
Mean (median)	12 (10)	-	50 (50)	20 (20)	35 (50)	-	30 (30)	-
Maximum	20	-	50	20	50	-	50	-

¹ Over the 12 months prior to the survey

- Damage by wild animals was attributed to: elephants (83%) and birds (17%).
- Reasons for selling crops were: to meet subsistence needs (67%); medical needs (17%); and because the household sells regularly (17%).

3. NATURAL RESOURCE USE

3.1 NR contribution to livelihoods and cash income

NR utilisation appears not to contribute widely to livelihoods within the conservancy. However, it seems to be important to those households/individuals who do utilise the resources. Building-pole cutting and craft making were both ranked as being the most important contributor to livelihoods by two households. Wildlife utilisation was ranked as the third most important contributor by three households; reed harvesting was ranked as the second most important contributor by one household; and as third most important by two households. Wildlife utilisation was also ranked as the third most important activity by two households.

In terms of importance to cash income, one household ranked craft making as the most important source. Reed harvesting was ranked by two households as third most important; building-pole cutting, craft making and use of wildlife were each ranked as third most important by one household.

Table 4 Number of households ranking resource utilisation as important (any rank)

Resource	Livelihood	Cash income
Reed harvesting	7	2
Building pole cutting	7	1
Craft making	2	2
Wildlife utilisation	13	1

3.2 NR utilisation by households²

- Firewood: Of those utilising firewood (n=81), 98.5% is consumed by the household and the remainder is bartered.
- Timber for poles: Almost all timber for poles is consumed within the household (n=11), with none being sold or bartered.
- Reeds: Of those who collect reeds (n=14), the average amount consumed within the household is 87%. Only two households barter reeds (30% and 50% of that collected) and three households sell reeds (average N\$430; N\$60 and N\$800).
- Palm leaves: One household collects palm leaves, all of which are consumed by the household.
- Medicinal plants: 34 households utilise medicinal plants, consuming approximately 97% within the household. Only three households barter them and only a small amount.
- Edible plants: 15 households consume on average 98% within the household. One household barter 25% of the amount they collect.
- Large mammals: Only one household utilises large mammals. This household consumes 10% within the household; barter 20%; and sells the remainder for N\$180.
- Insects: 12 household consume all of the insects collected.
- Honey: Six households consumed all of the honey collected.

Of the utilised resources, more than 60% of respondents believed the following NRs were in sufficient abundance to withstand increased harvesting: firewood, medicinal and edible plants, large mammals and honey. 55.6% believed that insects were in sufficient supply for more people to harvest them, but 29% disagreed. 36% believed reeds could be harvested by more

² This section refers to household NR use over the 12 months prior to the survey.

people, but 17% disagreed. 54% believed timber for poles could be harvested by more people, but 16% thought not. For more information on HWC, see tables re: livestock keeping and cropping/gardening.

Only 6% of households own hunting equipment and a further 2% have free access to the use of hunting equipment.

4. THE CONSERVANCY

15.5% of households are unaware that there is a conservancy in their area. 85% are aware: the number of members per household is shown in Table 5 below.

Table 5 Number of registered members per household (n=71)

Number of members/hh	% of households
0	11
1	30
2	28
3	16
4	10
5	1
6	1
7	1
13	1

- Of the 85% (71 households) who are aware there is a conservancy in their area, only 11% have no registered members; 83% have between one and four; and one household (1%) has 13 registered members.
- Of these 71 households, 34% know about the conservancy's management plans, but 47% were consulted about the development of the plans.
- 58% know about the conservancy's constitution and 54% of them were consulted in the development of the constitution.
- Of the 65 households who responded positively to having roles and responsibilities associated with the conservancy, 52% stated their responsibility was only to be registered as members; 32% that it was to look after wild animals; and 6% that it was to attend meetings. The remaining 9% stated their responsibility was either to be the treasurer of the conservancy; to assist conservancy members/enforce regulations; to be the chairman of conservancy; to be involved in the planning process; to be involved in the decision making in conservancy policies; or to manage the conservancy.
- 49% of households knew what the roles and responsibilities of various committee members were; 51% did not (n=71).
- 15 households undertake paid work for the conservancy, averaging 19 days over the previous three months (1-90). For this, they receive an average salary of N\$653, ranging between \$50 and N\$2,200.
- Only 13% (nine households) contribute in kind or in cash to the conservancy.
- Seven households undertake unpaid work for the conservancy, on average nine days over the previous three months.
- The most commonly cited advantages of the conservancy to the community were: the distribution of meat to the community (49%); no advantages (14%); donation of money to schools (12%) (n=92).

- The three main advantages of the conservancy at the household level were identified as: distribution of meat to households (73%); no advantages (12%); and provision of jobs to household members (8%) (n=77).
- The three main disadvantages of the conservancy to the community were identified as: no disadvantages (53%); unfair distribution of meat (7%); and favouritism (5%) (n=76).
- The three main disadvantages of the conservancy at the household level were: no disadvantages (60%); unfair distribution of meat (8%); and uncertainty about payments for ivory and animal skins (4%) (n=73).

Table 6 Impact of conservancy on availability of natural resources for household use (%)*

NR	None	Negative	Positive	DK/NA
Firewood	33	11	10	46
Birds	7	29	31	33
Large mammals	2	38	26	33
Reptiles	7	43	16	34
Small mammals	4	36	29	32

* Totals may not add to 100 due to rounding. Those resources where 'Don't know'/'Not applicable' responses exceed 50% are omitted.